

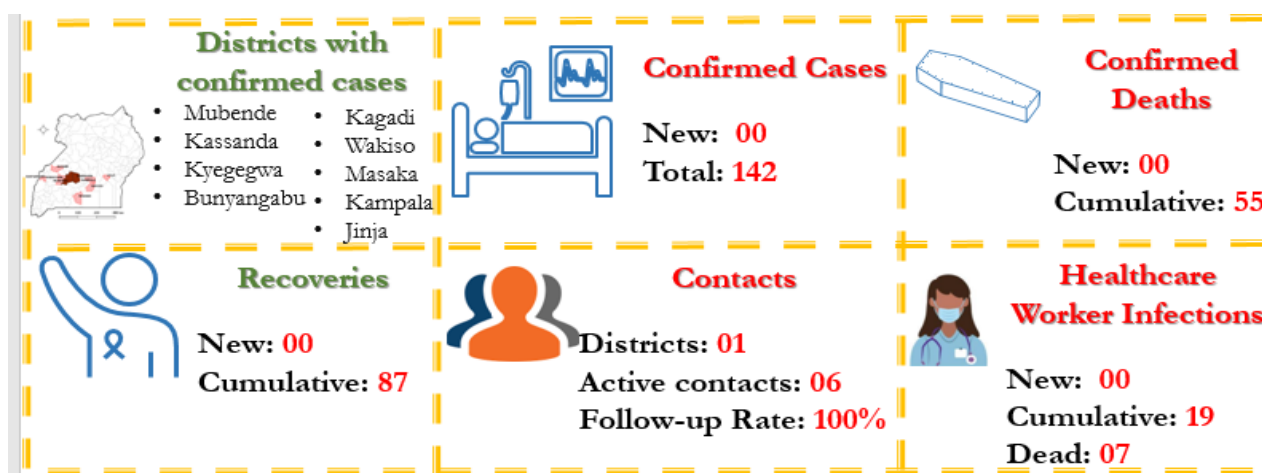
# EBOLA VIRUS DISEASE

Republic of Uganda



## Situation Report 71

Data update as of 11<sup>th</sup> December 2022 at 22 :00 HRS



### Background

On 20<sup>th</sup> September 2022, the Ministry of Health declared an outbreak of Sudan Ebola Virus (SVD) after a case managed at Mubende Regional Referral Hospital (MRRH) in Mubende district was confirmed through testing at the Uganda Virus Research Institute (UVRI). This followed investigations by the National Rapid Response Team of suspicious deaths that had occurred in the district earlier in the month. This is the first time in more than a decade that Uganda reports an outbreak of Sudan ebolavirus

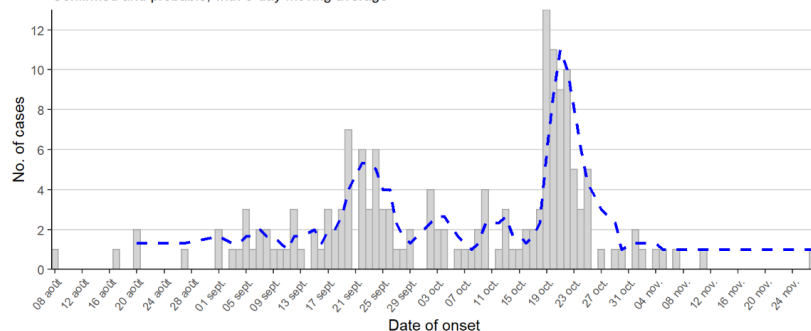
## Key Highlights

Today marks 86 days of responding to the EVD outbreak, and 14 days since the last confirmed case.

- ➔ Within the past 24 hours, there was no new confirmed case or death registered, there was no recovery.
- ➔ Case Fatality Ratio (CFR) among confirmed cases still stands 55/142 (39%).
- ➔ Six contacts actively being followed-up in Kassanda, district, follow-up rate in the past 24 hours was 100%.

### Daily case incidence

Confirmed and probable, with 3-day moving average

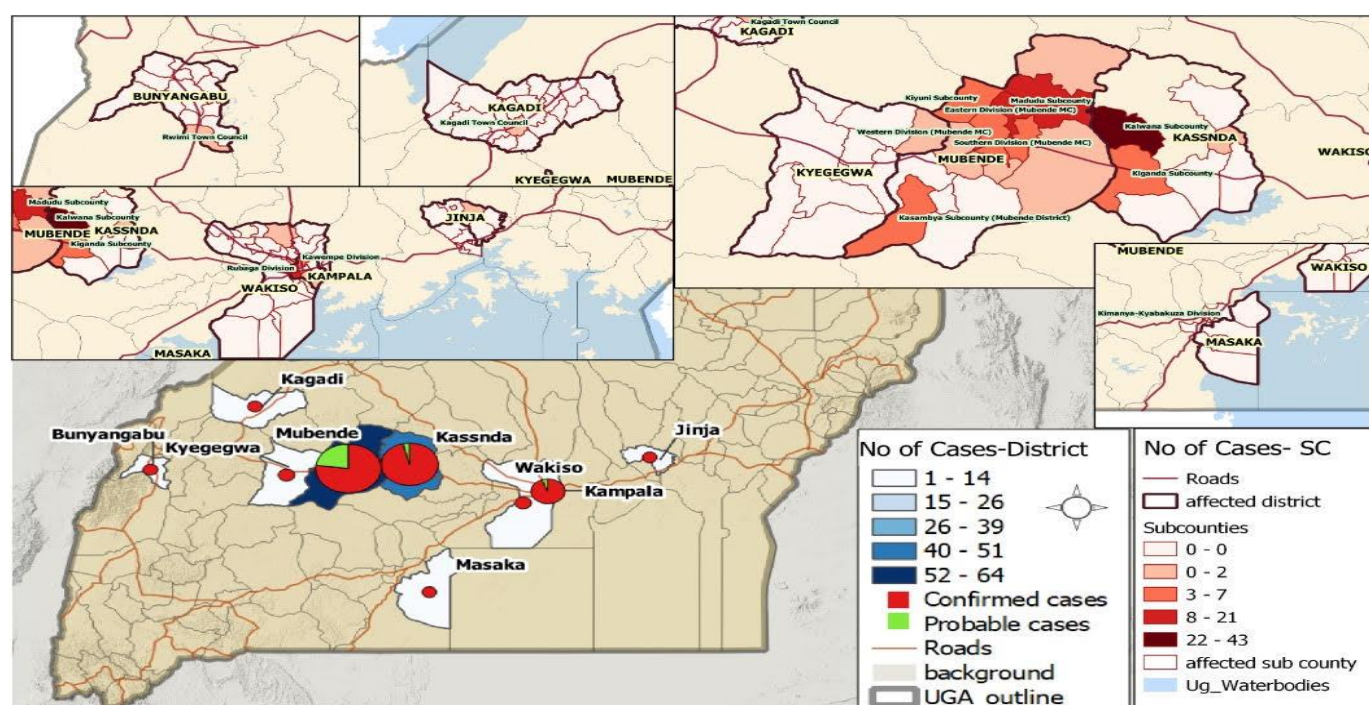


## Summary of Cases as of 11<sup>th</sup> December 2022 at 22:00 HRS

	Last 24 Hours									
	MUB	KYE	KAS	KAG	MSK	WAK	JJA	KLA	BUN	Total
Confirmed Cases	00	00	00	00	00	00	00	00	00	00
Confirmed Deaths	00	00	00	00	00	00	00	00	00	00
Recoveries	00	00	00	00	00	00	00	00	00	00
	Cumulative									
	MUB	KYE	KAS	KAG	MSK	WAK	JJA	KLA	BUN	Total
Confirmed Cases	64	04	49	01	01	03	01	18	01	142
Deaths										
Confirmed	29	01	20	01	01	00	01	02	00	55
Probable	19	00	02	00	00	00	01	00	00	22
Days since last confirmed case	28	44	14	74	40	35	29	27	71	-
Recoveries	38	03	26	00	00	03	00	16	01	87
Confirmed HCW										
Confirmed	14	00	01	01	00	00	00	02	01	19
Deaths	6	00	00	01	00	00	00	00	00	07

Table Acronyms: MUB=Mubende, KYE=Kyegegwa, KAS=Kassanda, KAG=Kagadi, WAK = Wakiso, KLA = Kampala, MSK = Masaka, JJA = Jinja, BUN=Bunyangabu, HCW=Healthcare Worker

## Place analysis of affected persons by district as of 11<sup>th</sup> December 2022 at 22:00 HRS





## Alert Management, Evacuations, Burials summaries as of 11<sup>th</sup> December 2022 at 22:00 HRS

Updated 11Dec22 at 22:00 hrs	Last 24 Hours														
	MUB	KAS	KMA	MSK	JJA	Total		MUB	KAS	KMA	MSK	JJA	Total		
EVD Alerts	22	10	77	6	18	133	EMS Ambulance fleet	10	6	4	4	2	26		
Alerts Verified	22	10	77	6	17	132	EMS alerts handled	17	4	0	0	1	22		
Alerts meeting suspect case definition	9	0	0	2	0	11	EMS evacuations - ALL	17	4	0	0	0	21		
Alerts evacuated	9	0	0	2	0	11	- to ED	0	1	-	-	-	1		
							- to ETU	0	1	0	0	0	1		
All death alerts received	5	4	0	2	6	17	- to Madudu	1	1	-	-	-	2		
Verified Death Alerts	4	4		3	1	12	- to Annex, MOW	8	2	-	-	-	10		
SDBs undertaken	4	3	0	0	0	7	- declined	0	0	0	0	0	0		
- Backlog cases today	0	1	0	0	0	1	Triage Category - Red	1	2	0	0	0	3		
- Samples collected	3	4	0	0	1	8	- Yellow	6	2	0	0	1	9		
Cumulative SDBs undertaken	381	303		0	8	692	- Green	2	0	0	0	0	2		
Samples tested (suspects, rebleed, swabs)	14	17	0	1	4	36	Cumulative Evacuations								
							EVD	1,199	334	38	41	30	1,642		
							Non-EVD	991	501				1,492		
	Cumulative														
	MUB	KAS	KMA	MSK	JJA	KYE	KAK	KAG	FPC	LUW	NAK	NTG	MTN	MTM	BUN
Contacts listed	2,190	1,037	534	163	536	70	67	23	3	5	8	20	82	16	48
Contacts completed 21 days of follow-up	2,105	850	534	163	392	67	67	23	3	5	8	20	82	16	48

**Table Acronyms:** MUB=Mubende, KYE=Kyegegwa, FPC= Fort Portal City, KAS=Kassanda, KAG=Kagadi, KMA = Kampala Metropolitan (Kampala + Wakiso), BUN = Bunyangabu, KAK = Kakumiro, NAK = Nakasongola, LUW = Luweero, MTN = Mityana, MTM = Mitooma, NTG = Ntungamo, MSK = Masaka, JJA = Jinja

### Actions to date

The Ministry of Health (MoH), Districts, and partners in Uganda are implementing several outbreak control interventions in Mubende and her surrounding districts to contain the disease spread. An overview of key activities is summarized below:

#### Response Pillar

#### Key Updates in the past 24 hours

Coordination	➔ Regular District Task Force meetings on-going in all affected districts, National Task Force meets twice a week
Surveillance & Contact tracing	➔ Active contacts in the past 24-hours are 06 in Kassanda, who were all followed up. ➔ Total alerts validated in past 24 hours were 132 from Mubende, Kassanda, KMA, Masaka and Jinja districts; 11 of these met the suspected case definition and 11 were evacuated. ➔ In the past 24-hrs, a total of 26 alerts received from 10 districts (category 2 and 3). All tested NEGATIVE for EVD (SUD) ➔ Active case search undertaken in 95 healthcare facilities of KMA, three facilities in Jinja district, five villages of Mubende, five facilities in Jinja city. ➔ Team Kyegegwa oriented six private health facilities in EVD active case search in Nkomangene parish, Kyatega sub-county.
Laboratory	➔ Total of 43 samples processed at UVRI and the mobile labs in Kampala and Mubende within the past 24 hours ➔ Cumulative samples tested are 4,921 with 142 testing POSITIVE for EVD (SUD) ➔ Laboratory pillar recommends a national bio-risk and biosecurity assessment in all laboratories across the country
Case Management	➔ Zero confirmed cases on admission currently; On-going clinical patient care on all suspected wards. ➔ Within the past 24-hours, beds occupied in suspected wards of Mubende new ETU: 09/30, Madudu: 1/8.
Emergency Medical Services	➔ Within the past 24 hours, teams undertook a total of 21 evacuations (Mubende - 17, Kassanda - 04). ➔ No client declined evacuations. ➔ Cumulative EVD-related evacuations in Kassanda, Mubende, KMA, Masaka and Jinja = 1,642; cumulative non-EVD evacuations in Mubende and Kassanda = 1,492.
Safe & Dignified Burials	➔ Within the past 24-hours, total of 17 death alerts verified from Mubende, Masaka, Jinja and Kassanda. ➔ Conducted seven safe and dignified burials in Mubende, Kassanda within the past 24 hours and collected eight samples. ➔ One backlog case in past 24-hours - family was not yet ready. ➔ Cumulative SDBs conducted in Mubende: 381, in Kassanda: 303
Infection Prevention and Control (IPC)	➔ Team Mubende supported cleaning and disinfection of the Old ETU; Conducted an IPC round in Kaweri ETU with IPC teams

<i>Risk</i>	➔ Two radio talk shows conducted in Mubende (1) and Kampala (1).
<i>Communication &amp; Public Awareness</i>	➔ At least 149 radio spots / messages continue to be aired daily through 11 radio stations in Kyegegwa 8, Kagadi 6, Kassanda 10, Kakumiro 10, Buyangabu 8 and Mubende 39, Masaka 13, Sembabule 13, Kazo 20, Kabarole 22).
	➔ RCCE teams disseminated 200 brochures, 60 fact sheets 67 posters 30 Q&A booklets, Kagadi, and Kyotera districts
<i>Social Mobilisation</i>	➔ Team Kagadi reached 247 people (97 males, 128 females 22 children) with EVD messages in Kagadi district
	➔ Held a dialogue meeting with business community in Bukuya Town council 108 participants (70 males and 38 females)
	➔ Team Kassanda held one engagement of Hotel and Lodge owners and workers 19 (13 male & 6 female) in Kiganda Town Council
	➔ One engagement of traditional healers 42 (22 male & 20 female) in Kiganda Town Council, Bukuya Town Council, Kassanda district
	➔ Engagement with Saloon owners and workers 18 (7male 11 female), in Kiganda Town Council, Kassanda district.
	➔ Kampala VHT's visited 2,253 households reaching 15,721 (Female 9,684 & Male 6,037) individuals and 6,207 children.
	➔ Mukono VHTs conducted house to house visits to 127 households and reached 469 (Female 248 & Male 221) and Children 146.
<i>Stakeholder Engagement</i>	➔ Team Wakiso supported the woman leader Nabweru South cell to conduct EVD awareness sessions among 73 women from this community.
	➔ Kampala VHTs conducted community meetings with market vendors in Bukasa, Kibuli, Lukuli and katwe parishes reaching a total of 3,752 (F = 2,074 and M=1,678) individuals.
	➔ Mukono VHTs conducted 17 dialogue meetings on EVD reaching 316 (Female 182 and Male 134) community members.
	➔ Team Kassanda empowered the 4 task forces and other groups met with knowledge, information, and messages on Ebola.
	➔ Team Jinja conducted 2 orientation meetings with drug shop, Pharmacy, private clinics owners and saloon operators. They reached a total of 43 (male 13 & female 300) people.
<i>Mental Health &amp; Psychosocial Social Support</i>	➔ <b>ETU SUPPORT:</b> Psychosocial support offered to 20 clients at the Ngabano quarantine, Madudu and new ETU; Mubende team continues to support two health workers in quarantine. All families updated on the status of their loved-ones currently admitted.
	➔ <b>RESETTLEMENT:</b> Nine clients from new ETU escorted back home; Communities engaged where discharged clients were resettled.
	➔ <b>SURVIVOR FOLLOW-UP:</b> Four survivors visited, six called via tele conferencing. Issues discussed include adherence to condom use and partner support

### Key messages to the public

- ➔ People in the community should call an alert hotline or go to a health facility if they have symptoms (e.g., fever, headache, weakness, vomiting, bloody diarrhoea or urine, bleeding from body openings).
- ➔ Hotline numbers are: **0800200043** for Mubende and Kassanda; **0800299000** for Kampala Metropolitan Area, **0800300043** for Masaka, **0800355411** for Kagadi all toll-free, **0800300046** for Jinja, and **0787437139** for Bunyangabu (not toll-free).
- ➔ Free alert SMS on **6767** starting with the 'ALERT' key word; Free alert SMS to U-report on 8500
- ➔ Community should not fear people who have been discharged from the ETU and returned home.